

Membrane Pumps
Solids Handling Pumps
High Pressure Pumps
Marine Pumps

ABEL SH

Solids Handling Pumps for fully automatic transfer, disposal and feed processes



For dry and highly dewatered media

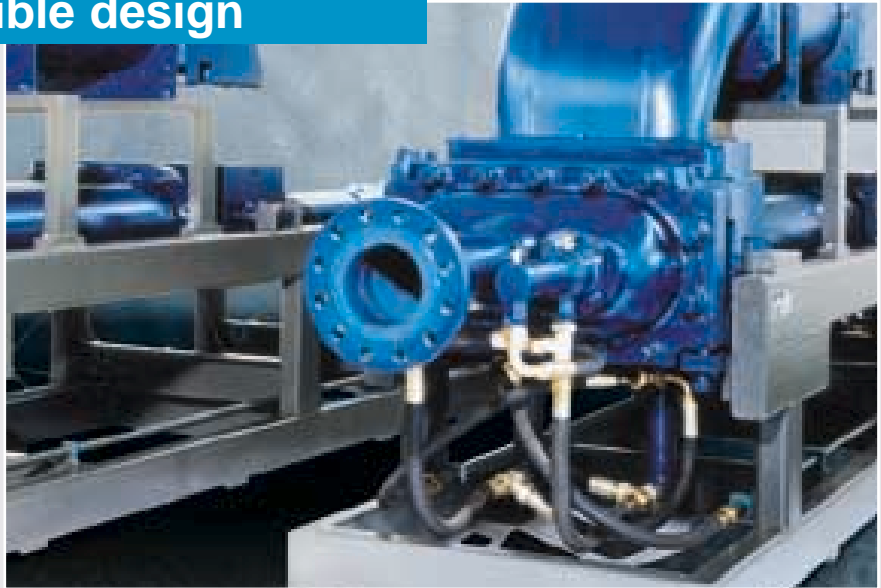
ABEL[®]
Pump Technology

ABEL SH Solids Handling Pump

Capacity up to 455 GPM, Pressure up to 2320 PSI

Module based, flexible design

Always designed for customized applications, even at changing operating conditions.



Even non-newtonian media are included in the wide spectrum of materials transferred by Positive Displacement Pumps.

In this case, the ABEL Solids Handling Pumps SH (see diagram below) are especially suitable for transferring practically any medium by enclosed pipeline.

Modular Design

The ABEL Solids Handling Pump is a hydraulically-driven positive displacement pump consisting of 4 components:

- 1) The pump itself, with pump drive and valve cylinders,
- 2) the hydraulic power pack,
- 3) screw feeder to fill the pump cylinders,
- 4) the control panel with PLC – the 'brain' of the system, which also allows integration into complex processes and control systems.

Variations

ABEL Solids Handling Pumps not only offer excellent capacity coverage, they are also used for the widest range of media and operating areas:

All components are purpose-designed and available in special materials as required. For these reasons, ABEL Solids Handling Pumps:

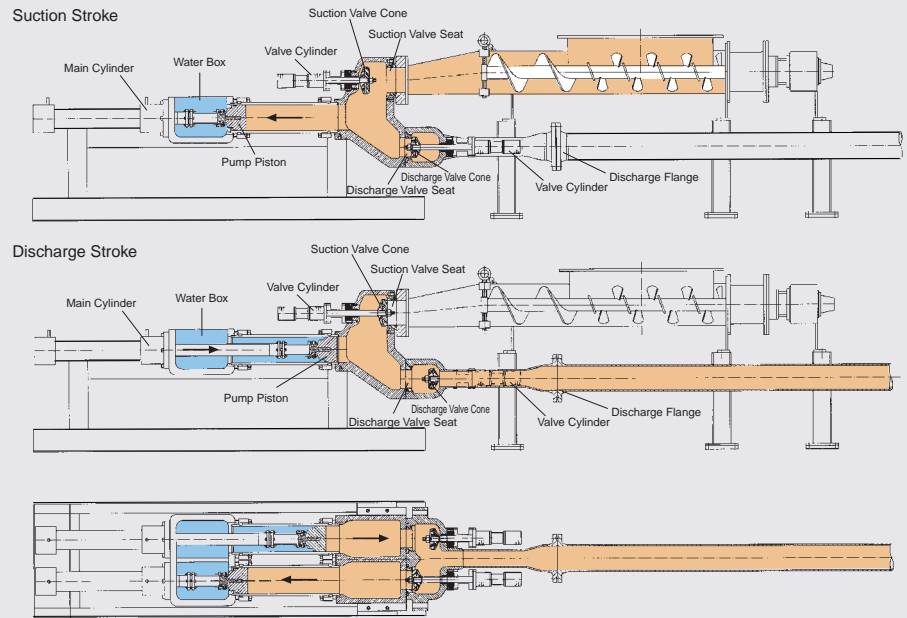
- Provide fully automatic and efficient transfer
- Can run dry and are protected against excess pressure
- Ensure enclosed, controlled pumping

The Design Advantages

- Duplex Piston Pump with hydraulically-actuated cone valves
- Electrical pump control as standard with modern PLC for local or external parameters, e.g. incinerator temperature, control
- Pumping capacity adjustment by proportional valve technology
- Capable of running dry, protected against excess/back pressure
- Enclosed pipeline transfer
- Fully automatic, efficient disposal and feed operations

Optimized filling efficiency

Odorless,
environmentally
beneficial and
cost-saving:
Frontloader
for enclosed
pipeline transfer.



Since the performance of a Solids Handling Pump depends considerably on how efficiently the pump is filled, ABEL has designed a new 'front-loading feed' system. This is especially useful for sludges/cakes with high dry solids content.

↑ *The pump piston draws the medium into the pump cylinder. When the piston reaches its end position, the suction valve closes and the discharge valve opens. Then the pump piston begins its discharge stroke and pushes the medium into the discharge line.*

Pumping medium is fed by a double screw feeder into the ABEL Solids Handling Pump.

With minimal directional change (< 32 degrees), it enters the pump through an open, hydraulically actuated suction valve.

The suction side valve rods are not located in the line of the flow, so a maximum through-flow of medium is assured during a discharge stroke.

Advantages of front-loading

With this solution, the pump cylinders are filled directly, which means:

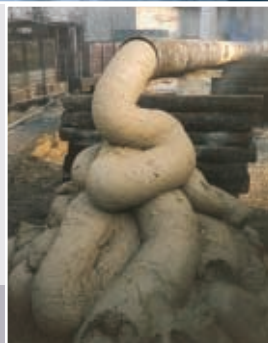
- No unnecessary directional change
- No clogging of the pump cylinders
- Maximum filling and pumping efficiency



Complete Automation with PLC for Central Control Systems

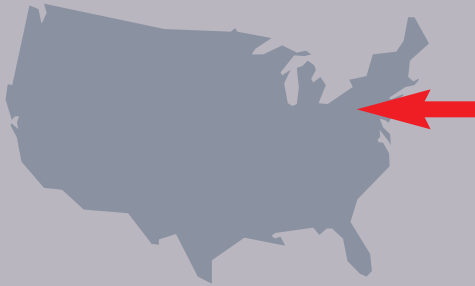
Various external control parameters like incinerator temperature or silo filling levels can be used as input signals for the PLC. The capacities of pump and feed device are automatically adjusted.

ABEL has supplied numerous custom made systems to fulfill the critical needs of customers.



ABEL SH

Solids Handling Pumps for fully automatic transfer, disposal and feed processes



ABEL Pumps, L.P.
79 N. Industrial Park
207 Overlook Dr
Sewickley, Pennsylvania
PA 15143-2339 USA
Tel: 412 741 3222
Fax: 412 741 2599
mail@abelpumps.com
www.abelpumps.com

Assistance:

The qualified staff of ABEL Pumps, L.P. is ready to assist you with your critical needs.

Please contact us with your specific requirements.

Services include:

- ▲ Start-up
- ▲ Training
- ▲ Installation
- ▲ Repair
- ▲ Warranty Contracts
- ▲ Upgrades
- ▲ Telephone Diagnostics
- ▲ On Site Repairs
- ▲ Part Kits
- ▲ Qualified Representatives for Local Assistance

Certifications:

- ▲ ISO 9001
- ▲ MIL-I-45208A

Helpful Information:

Company:	e-mail:
Address:	Tel./Fax:
	Contact:
Application:	Why needed?
	Temperature:
Fluid:	Sp. Gr.:
Flow Rate:	Pressure:
Solids? % & size:	Viscosity:
Operating Cycle:	Special Materials:

Combined Slurry:

% Solids 1) By Weight 2) By volume

Abrasivity (Miller Number) PH Value

Viscosity Describe consistency

Remarks:

Thank you for the opportunity to be of service! – ABEL Pumps, L.P.